



Forest Drive, Epping, CM16

BUTLER  STAG



A fantastic opportunity to put your own stamp on this detached bungalow which offers huge scope for redesigning, extending or development into two dwellings subject to planning approval.



Freehold

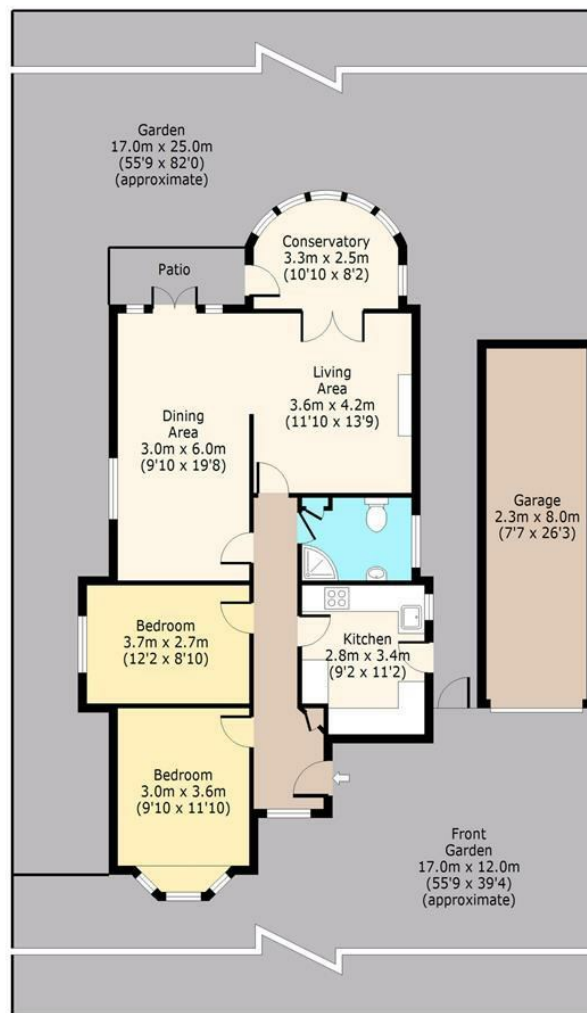
- Detached Bungalow
- Two Bedrooms
- Garage & Off Street Parking
- Central Village Location
- Excellent Scope to Improve
- Chain Free

The property has been enjoyed in the same family for many years and boasts fantastic potential to turn into something truly special. Accommodation comprises of two double bedrooms, bathroom, lounge, dining room, conservatory and kitchen all in need of modernisation.





**Forest Drive
Theydon Bois, CM16 7EZ**
Ground Floor
Approx. 88 Sq. meters (947 Sq. feet)



Total area: approx. 88 Sq. meters (947 Sq. feet)
For illustration purposes only - not to scale
www.londonpropertyassessments.co.uk

IMPORTANT NOTICE - These particulars have been prepared in good faith and they are not intended to constitute part of an offer or contract. We have not performed a structural survey on this property and the services, appliances and specific fittings have not been tested. All photographs, measurements, floor plans and distances referred to are given as a guide and should not be relied upon.

BUTLER & STAG

☎ 01992 667666

🏠 4 Forest Drive, Theydon Bois, Essex, CM16 7EY

✉ theydon@butlerandstag.com

www.butlerandstag.uk